

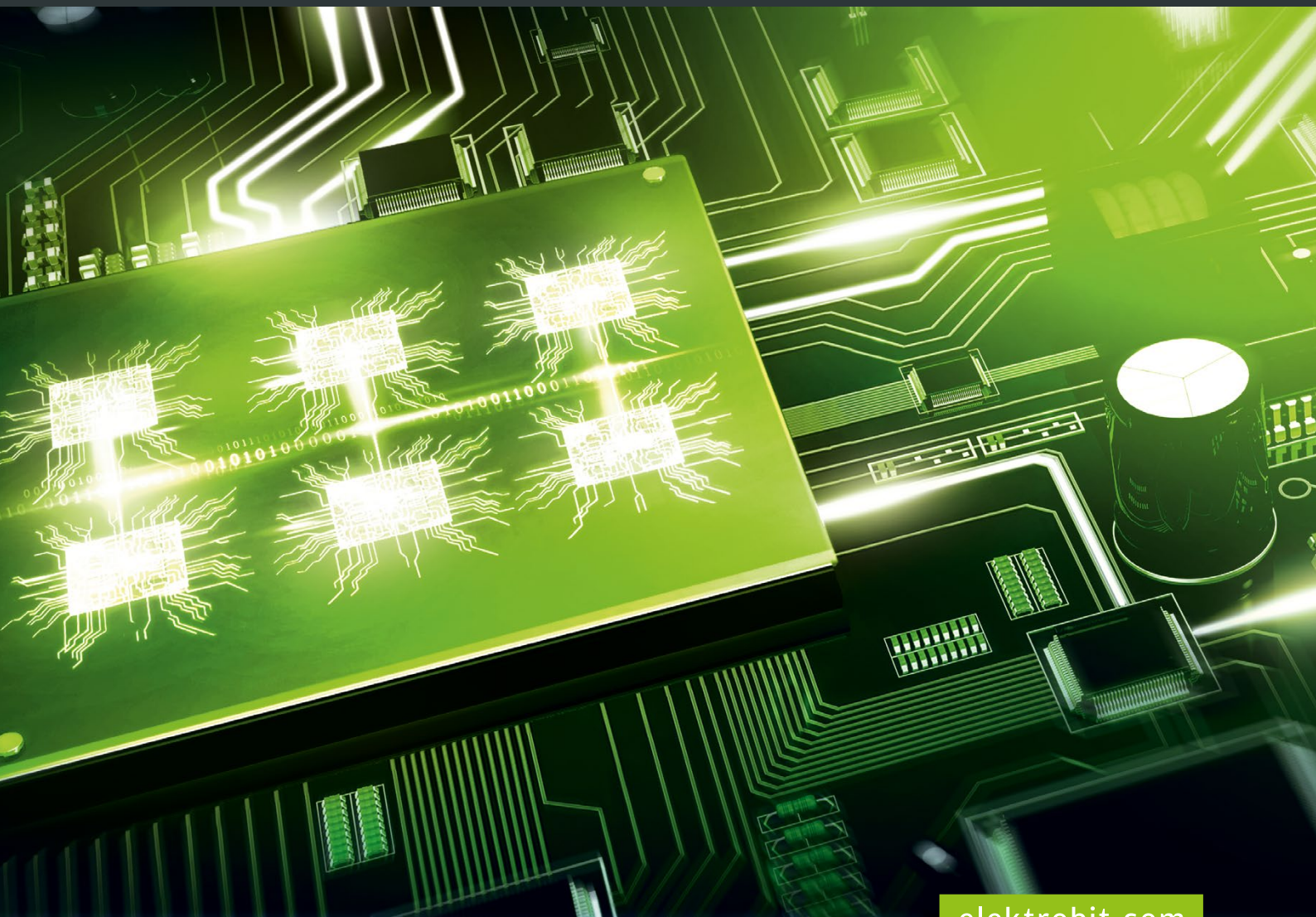


Elektrobit

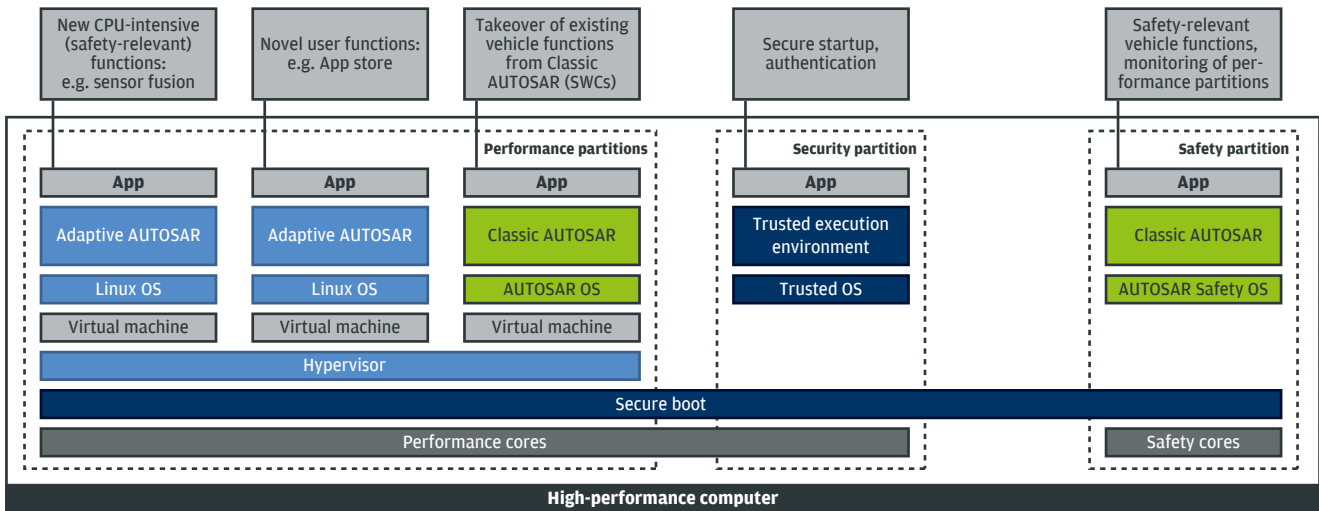
# EB corbos

## Where safety meets performance

Everything you need to bring Adaptive AUTOSAR on the road



[elektrobit.com](http://elektrobit.com)



## Including

### EB corbos AdaptiveCore

- ▶ Basic software for safe and secure high-performance control units

### EB corbos Hypervisor

- ▶ Software layer to run multiple (different) operating systems on one single CPU

### EB corbos Linux

- ▶ High-performance operating system

### EB corbos Studio

- ▶ An integrated development environment for EB corbos products

## Features

- ▶ Provides run-time environment, software update capability, and embedded security
- ▶ Is based on the portable operating system interface (POSIX)
- ▶ Has several operating systems running on one processor
- ▶ Provides hardware virtualization
- ▶ Provides separation between virtual machines on different CPU cores
- ▶ Has in-kernel safety-monitoring for critical parts

## Benefits

- ▶ Guarantees highest safety levels for automated driving
- ▶ Reduces system complexity
- ▶ Saves time and cost through re-usable software functions
- ▶ Adds functions easily, fast, and securely during the car's life cycle over the air
- ▶ Integrates connected and automated driving applications easily through a standardized software framework
- ▶ Saves physical space by integrating multiple systems on one device
- ▶ Optimizes resource utilization