

EB GUIDE Speech Extension tutorial

Inserting variable placeholders into speech input

Copyright © 2017 Elektrobit Automotive GmbH

Legal notice

Confidential and proprietary information.

ALL RIGHTS RESERVED. No part of this publication may be copied in any form, by photocopy, microfilm, retrieval system, or by any other means now known or hereafter invented without the prior written permission of Elektrobit Automotive GmbH.

ProOSEK®, tresos®, and street director® are registered trademarks of Elektrobit Automotive GmbH.

All brand names, trademarks and registered trademarks are property of their rightful owners and are used only for description.

1. Tutorial: Inserting variable placeholders into speech input

The following instructions guide you through the process of configuring a command with a datapool slot. The datapool slot is linked to a datapool item with a list of radio stations.

Approximate duration: 10 minutes.




Adding a datapool item of type `String list`

The following instruction guide you through the process of adding two datapool items. The first datapool item provides values for a list of radio stations. The datapool items will be used within an SRGS grammar of a command.

Prerequisite:

- The EB GUIDE model contains a talk state.
- The `Change station` event is added.
- The content area displays a talk.
- The talk contains an SSML prompt.
- The `SSML prompt` property is linked to a datapool item of type `SSML prompt`.
- The datapool item contains the text `Select a station`.
- The navigation area displays the **All** tab.

Step 1

In the navigation area, go to **Datapool**, and click .

A menu expands.

Step 2

In the menu, click `String list`.

A new datapool item of type `String list` is added.

Step 3

Rename the datapool item to `Radio station result`.

Step 4

Add another datapool item of type `String list` or copy and paste the first datapool item with **Ctrl+C** and **Ctrl+V**.

Step 5

Press the **F2** key and rename the datapool item to `Radio station list`.

Step 6

In the **Properties** panel, go to the `Value` property, and click the  button next to the property.

An editor opens.

Step 6.1

To add an item to the list, click **Add**.

A new entry is added to the table.

Step 6.2

Enter `Station one` in the **Value** text box.

Step 6.3

Add the following values to the `Radio station list` datapool item.

- ▶ `Station two`
- ▶ `Station three`
- ▶ `Station four`

Step 6.4

Click **Accept**.

The content of the list is displayed next to `Value`.

You added two datapool items of type `String list`.



Adding a command and linking the SRGS grammar

Prerequisite:

- You completed the previous instruction.

Step 1

Drag a command from the **Toolbox** into the lower section of the content area.

A dialog opens.

Step 2


To add a datapool item, enter `RadioGrammar` in the combo box.

Step 3

Click **Add datapool item**.

Step 4

Confirm with **Accept**.

The dialog closes. In the properties panel, next to the `grammar` property, the  button is displayed. It indicates that the `grammar` property is linked to a datapool item.

Step 5

In the navigation area, click the command.

Step 6

Rename the command to `Radio`.

You added a command and linked the `grammar` property to a new `RadioGrammar` datapool item of type `SRGS grammar`.



Adding and editing a datapool slot

The following instructions guide you through the process of adding a datapool slot to a command. You link the datapool slot to the datapool items that you created previously.

Prerequisite:

- You completed the previous instruction.

Step 1

In the content area, double-click the `Radio` command.

The content area displays an editor.

Step 2

Drag a datapool slot from the **Toolbox** into the **Slot instance** section in the content area.

Step 3

Select the datapool slot.

The **Properties** panel displays the properties of the datapool slot.

Step 4

Go to the **Properties** panel.

Step 5

In the `slotName` text box enter `Station`.

Step 6

Next to the `recognizedOrthography` property, click the button.

A menu expands.

Step 6.1

Select **Add link to datapool item**.

Step 6.2

Select `Radio station result`.

Step 6.3

Click **Accept**.

Step 7

Next to the `inputOrthography` property, click the button.

A menu expands.

Step 7.1

Select **Add link to datapool item**.

Step 7.2

Select **Radio station list**.

Step 7.3

Click **Accept**.

You added the **Station** datapool slot to the **Radio** command. You linked the properties to datapool items.

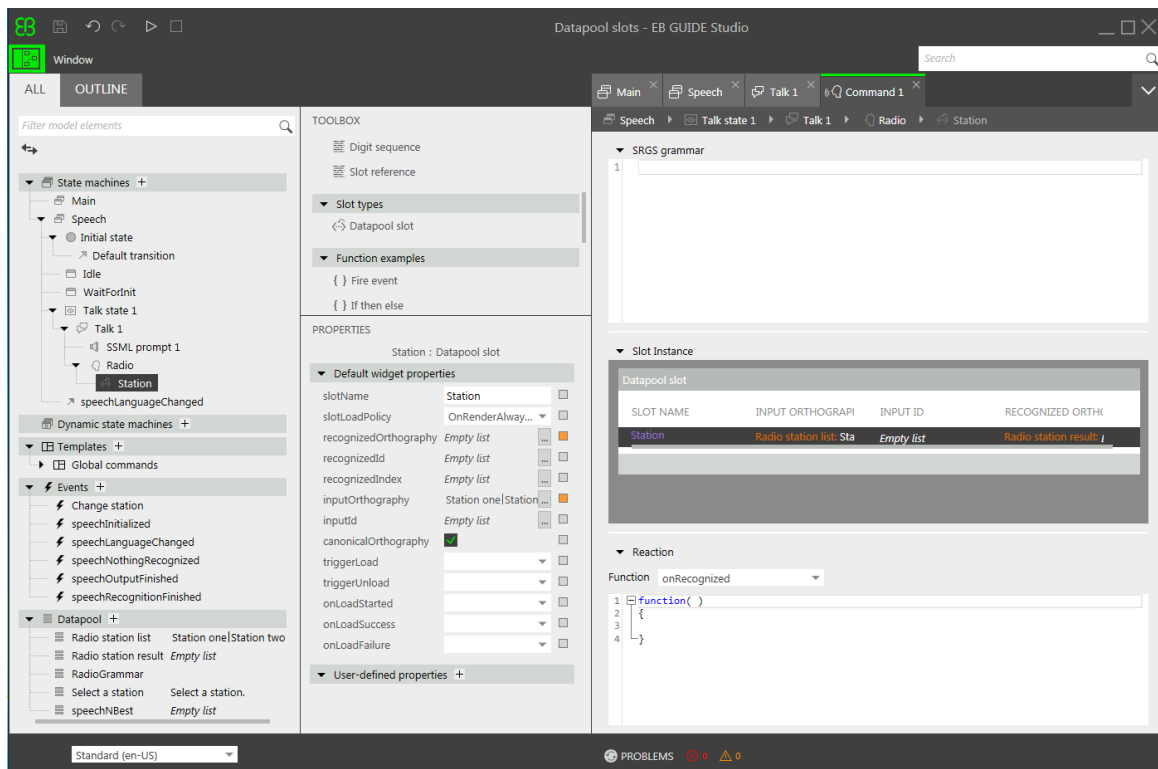


Figure 1. Datapool slot inside a command



Defining an SRGS grammar for the command

Prerequisite:

- You completed the previous instruction.

Step 1

In the content area, go to the **SRGS grammar** section.

Step 2

Enter **Select**.

Step 3

Drag the `Station` datapool slot from the **Slot instance** section into the **SRGS grammar** section.

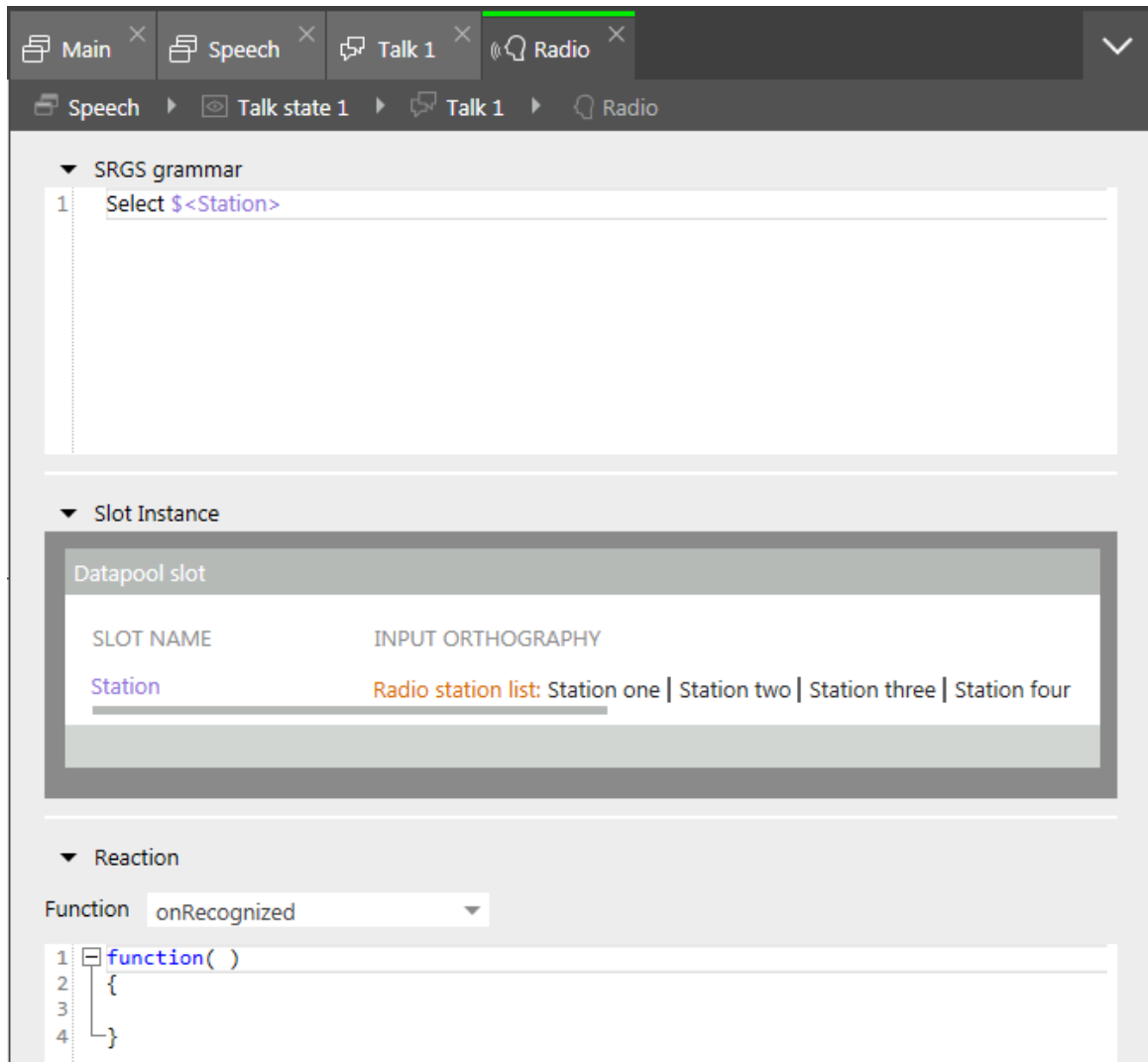


Figure 2. Datapool slot inside a command



Defining a function

To see a reaction on user input, you fire an event which changes a radio station.

Prerequisite:

- You completed the previous instruction.

Step 1

In the content area, go to the **Reaction** section.

Step 2

Enter the following EB GUIDE Script:

```
function( )  
{  
  fire ev:"Change station"()  
}
```

Every time a user input for the `Radio` command is recognized the `Change station` event is fired. The datapool item `Radio station result` contains the recognized radio station with highest confidence, e.g. `Station three`.